

Tenor 2^{do} Misa à 3 voces por D. Aldefonso Jimeno Abtro de =
Capilla de la Catedral Metropolitana de Santiago de Cuba =

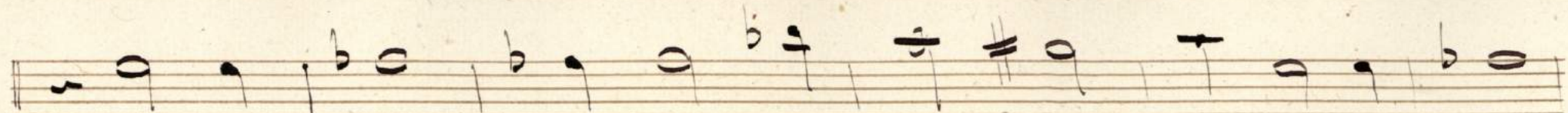
All^o mod^{to} $\text{D} \# \text{C}$ $\frac{3}{4}$
Ki ri - e - lei - son Ki ri - e - lei -
son.

Gloria = All^o mod^{to} $\text{D} \# \text{C}$
Et in - ter - ra pax ho -
mi - ri - bus bo - nae bo - nae vo - lun - ta - tis
fil - li - us Pa - tris fil - li - us Pa - tris

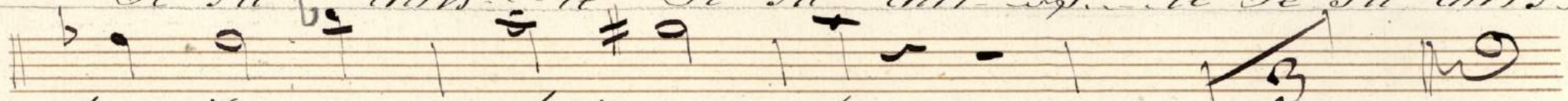
Qui tolis = And^{te} mod^{to} $\text{D} \# \text{C}$ $\frac{4}{6}$ Quoniam = All^o $\text{D} \# \text{C}$ $\frac{2}{4}$

$\frac{3}{4}$
VS

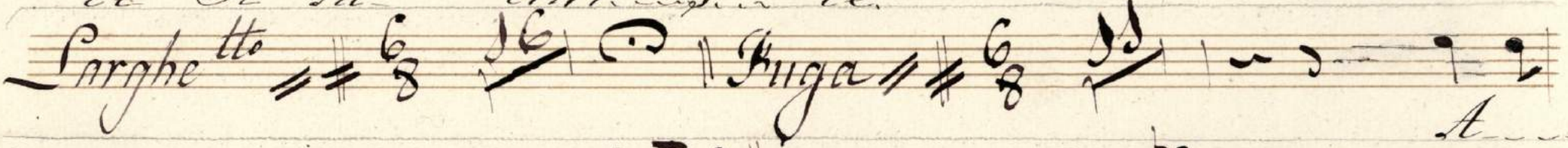




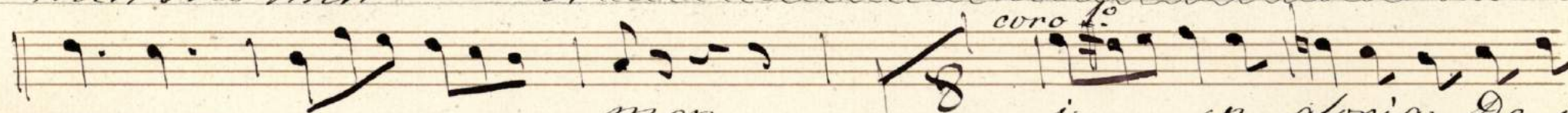
Je su chris-te Je su chris-te Je su chris-



te Je su chris-te.



men A-men A



in gloria De i-



Pa-tris A-men in Glo-ria De-i Pa-tris



De-i Pa-tris A



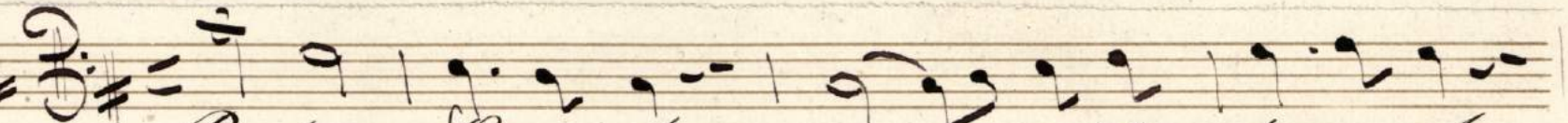
men Amen A



men A-men.

Credo

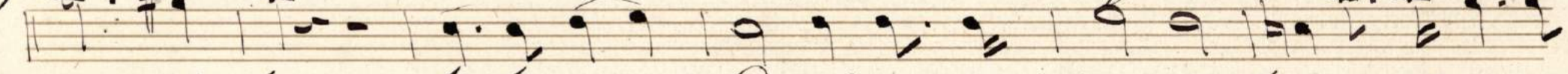
All^o mod^{to}



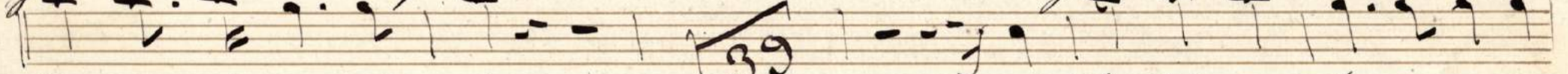
Pa trem Pa trem om ni pa trem



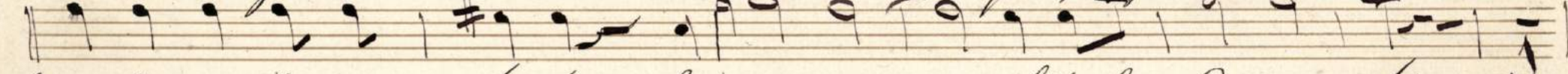
fa c to rem Cae li et te rre fi li um De i u ni



ge ni tum fi li um De i u ni ge ni tum u ni ge ni



tum u ni ge ni tum qui propter nos homi nes et



propter nostram sa lu tem des cen dit de Cae lis

Et in cae lis

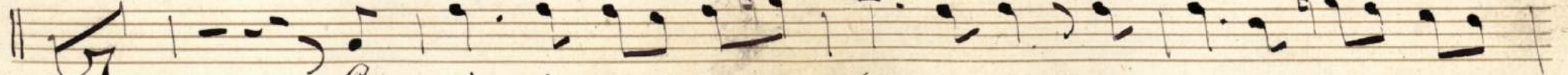
Et in cae lis

All^o mod^{to}

Et in cae lis



tu ras et as cen dit in cae lum se des ad dex te ram Pa tris



Et i te rum ven tu rus est ven tu rus est cum

glo-ri-a et i-te-rum ven-tu-rus est ven-tu-rus est cum glo-ri-a

Tu-di-ca-re vi-vos et mor-tu-os non e-rit fi-

nis

qui lo-cu-tus est per pro-pheta-s qui lo-

cu-tus est per Pro-pheta-s

men e-t vi-tam ven-tu-ri se-cu-li

A-men Et vi-tam ven-tu-ri

se-cu-li A-men Et

vi-tam ven-tu-ri Se-cu-li

men Et

vi-tam ven-tu-ri Se-cu-li

men Et

vi-tam ven-tu-ri Se-cu-li

men Et

vi-tam ven-tu-ri Se-cu-li

men Et

vi-tam ven-tu-ri Se-cu-li

men Et

And^{te} 3/8

Fuga = And^{te} 8

8

li A men Et vi tam ven tu ri se cu li A men
men A men A men

Sanctus

Allo mod^{to} All mod Sanc tus Sanc tus
Do mi nus De us Sa ba bot Hos
san na in ex ce lun sis Hos san na in ex
ce lun sis in ex ce lun sis in ex ce lun sis

Benedictus Facet

Yes

Agnus

Mod^{to} =

Agnus Dei qui
 tol lis pec ca ta mun di do na no bis pa cem do na
 no bis pa cem do na no bis pa
 cem do na no bis pa cem pa
 cem.